



Artist in Residence at Santa Fe Hotel

Daily



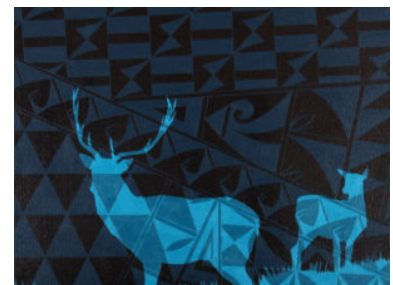
Photo: © La Fonda on the Plaza

By [Debra Bokur](#) - February 4, 2018

Established in 1922 and the recipient of numerous awards ever since, [La Fonda on the Plaza](#) in [Santa Fe](#) provides an authentic New Mexico experience in a decidedly luxurious setting. Locally made and hand-painted furnishings, local artwork and restaurants specializing in New Mexico's Southwestern cuisine create a unique experience for travelers. The hotel's 180 rooms and suites include a private concierge level called The Terrace at La Fonda, featuring private balconies and luxury amenities.

The hotel's ongoing Artists in Residence program allows every guest to experience the art and artists that help create Santa Fe's world-renowned art scene. Through the end of February, the hotel lobby plays host to working artists including painter Marla Allison (Feb. 8-10), beadwork artist Hollis Chitto (Feb. 15-17) and basket weaver David McElroy (Feb. 22-24). Find them at work 4-7 p.m. on each scheduled day.

Specially themed escapes available through Feb. 28 include luxury guest accommodations for two; complimentary breakfast for two at La Plazuela restaurant; complimentary passes for two



LA

nte

LA

BO
EXT
BU'

SIC
IN

M)

I'm
Asi

AR

St